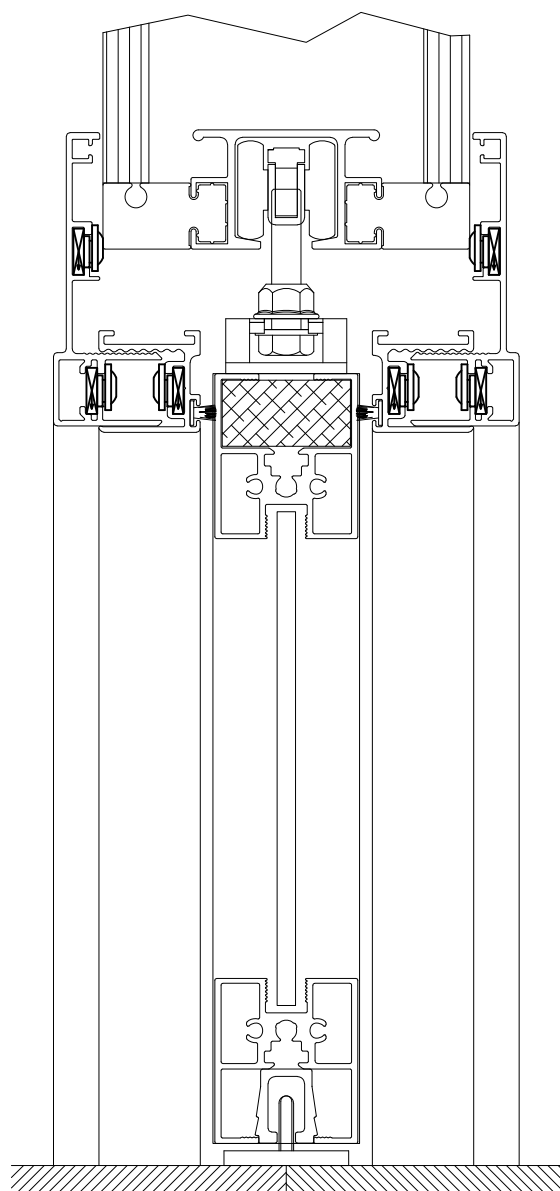
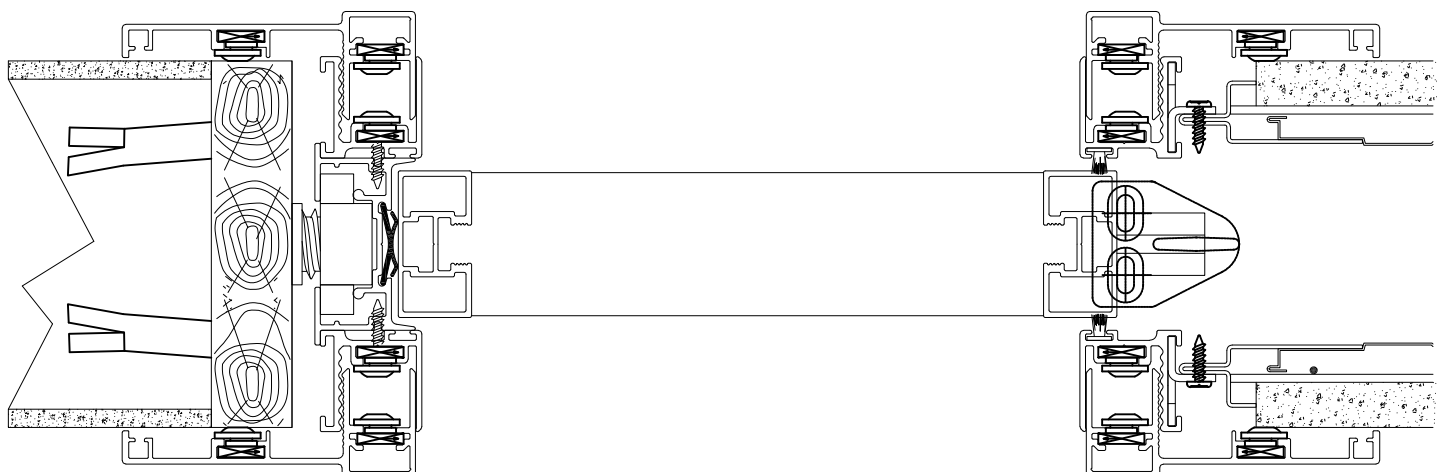
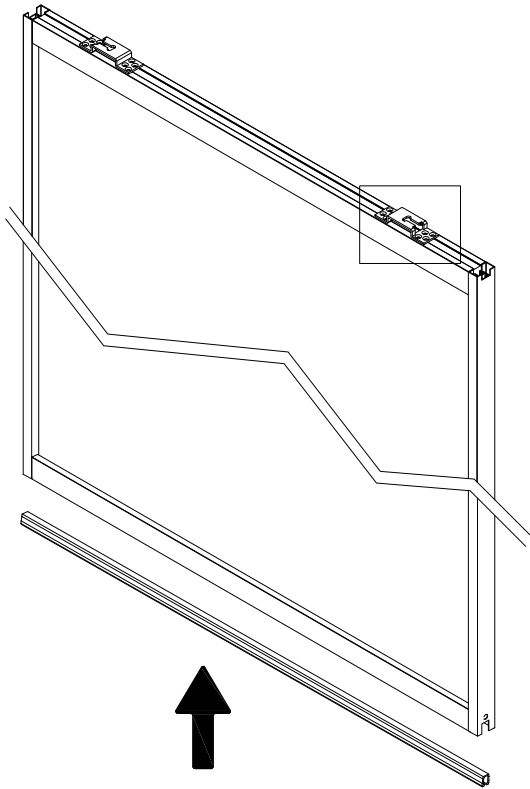


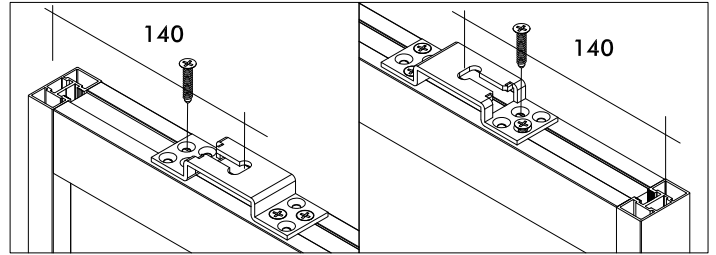
- ISTRUZIONI DI MONTAGGIO SCORREVOLE INTERNO MURO
- INSTALLATION INSTRUCTIONS SLIDING DOOR FOR INTERIOR WALLS
- NOTICE DE MONTAGE PORTE COULISSANTE POSE A GALANDAGE



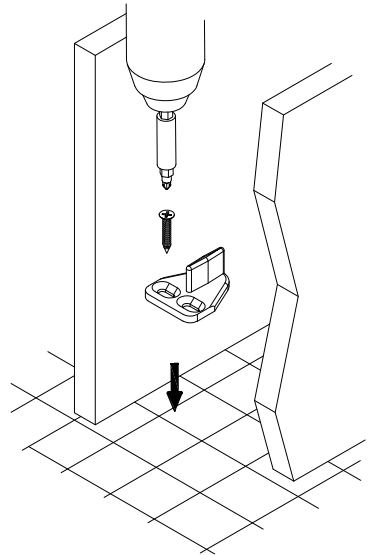
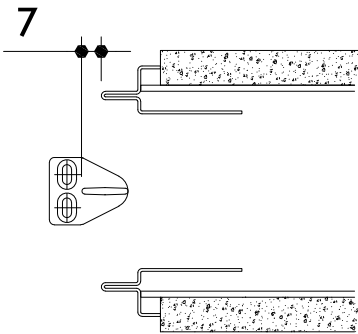
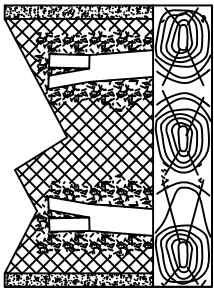
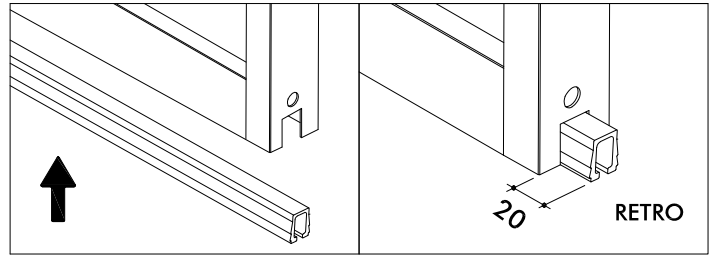
- MONTAGGIO FERRAMENTA
- HARDWARE ASSEMBLY
- ASSEMBLAGE DU MATÉRIEL



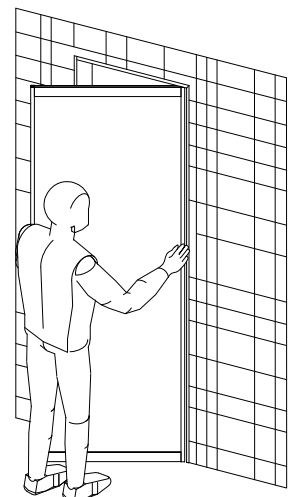
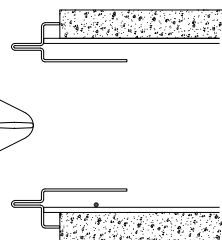
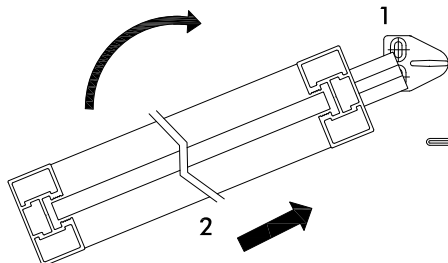
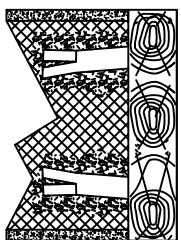
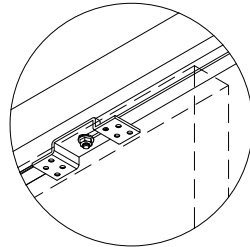
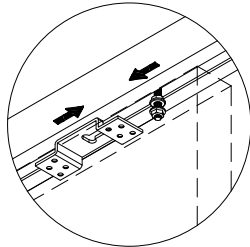
LATO SUPERIORE



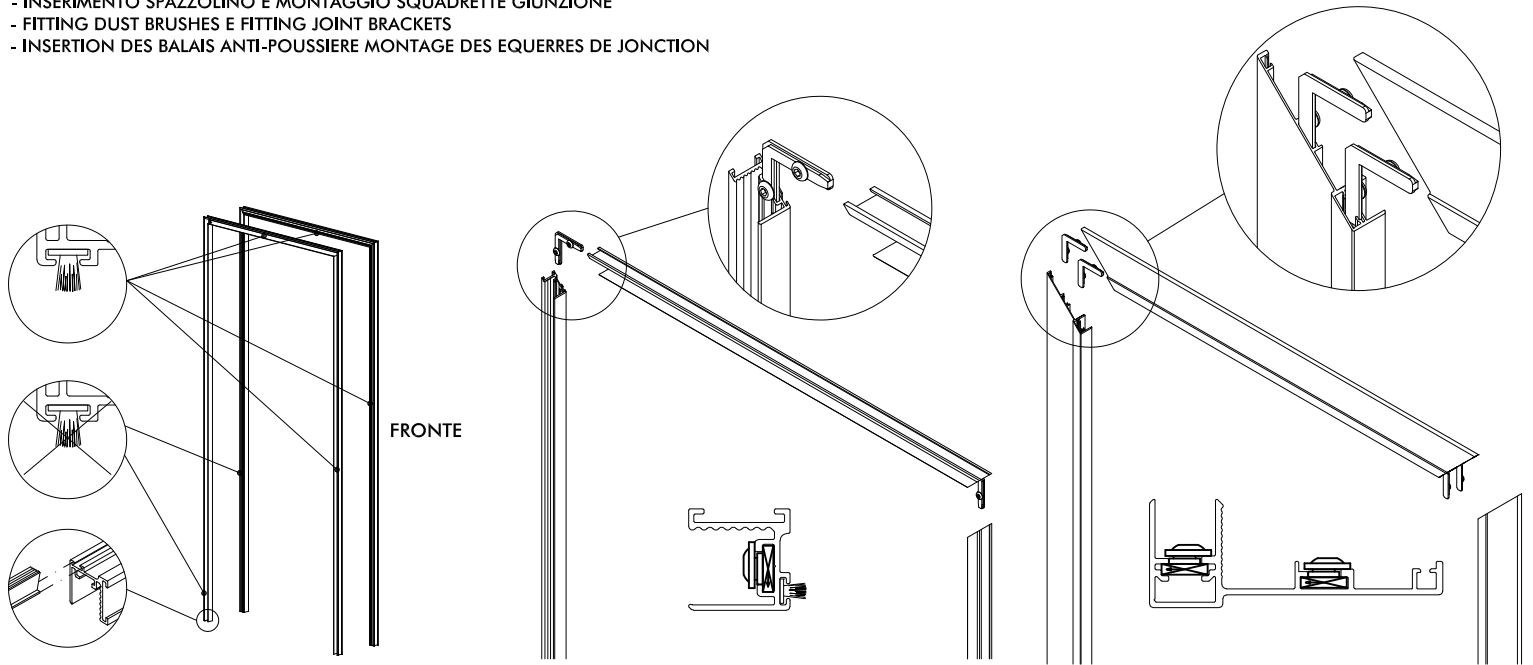
LATO INFERIORE



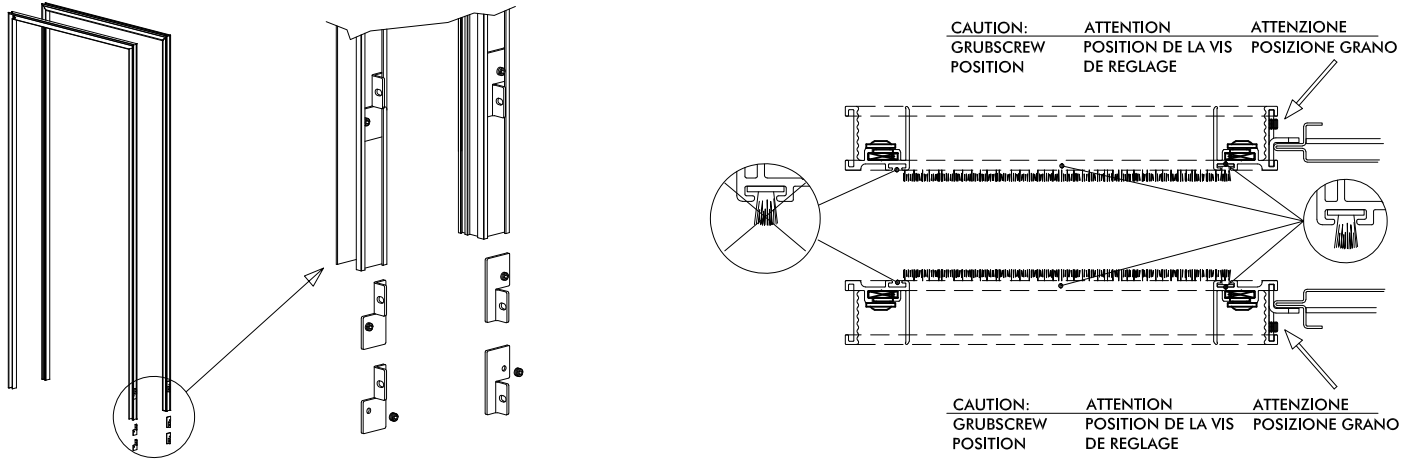
- MONTAGGIO ANTA
- DOOR POSITIONING
- POSITIONNEMENT DU VANTAIL



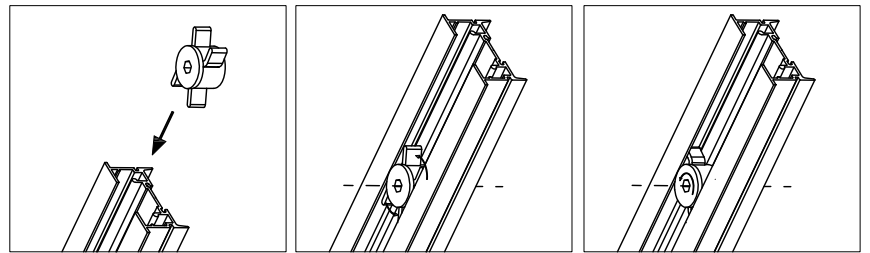
- INSERIMENTO SPAZZOLINO E MONTAGGIO SQUADRETTE GIUNZIONE
- FITTING DUST BRUSHES E FITTING JOINT BRACKETS
- INSERTION DES BALAIS ANTI-POUSSIÈRE MONTAGE DES EQUERRES DE JONCTION



- INSERIMENTO STAFFE FISSAGGIO TELAIO
- FITTING FRAME FIXING BRACKETS
- INSERTION DES BRIDES DE FIXATION DU CHASSIS



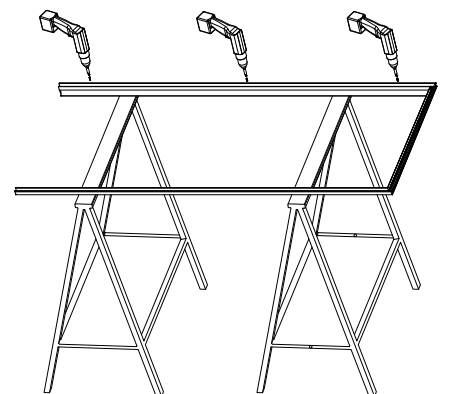
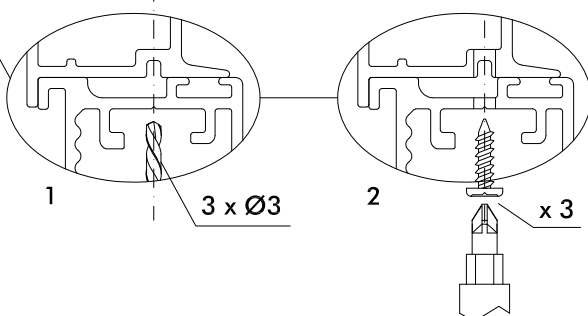
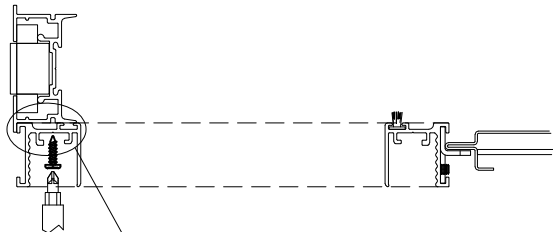
- ASSEMBLAGGIO PROFILO BATTUTA CON MEZZO TELAIO
- CLOSURE PROFILE ASSEMBLY WITH HALF FRAME
- ASSEMBLAGE DU PROFILE DE BUTÉE AVEC DEMI-CHASSIS



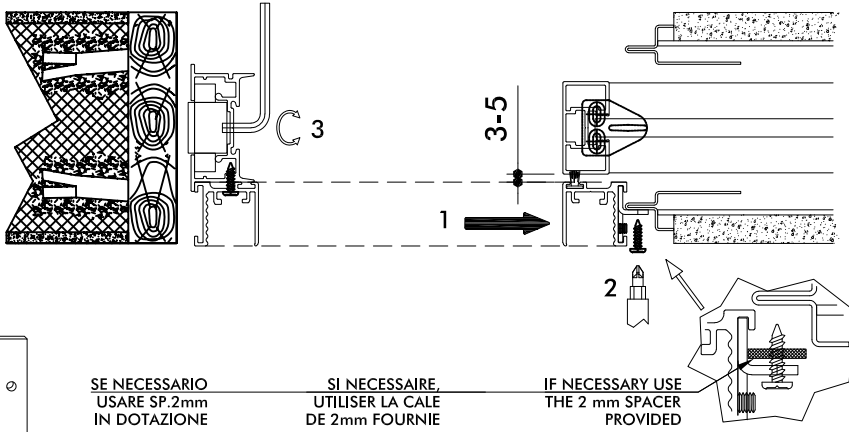
INSERIRE REGOLATORE NEL PROFILO

UNA VOLTA ALLINEATO IL REGOLATORE CON IL FORO, BLOCCARLO GIRANDOLO SU SE STESSO

ESEGUIRE LE REGOLAZIONI PRIMA DI FISSARE IL PROFILO DI BATTUTA



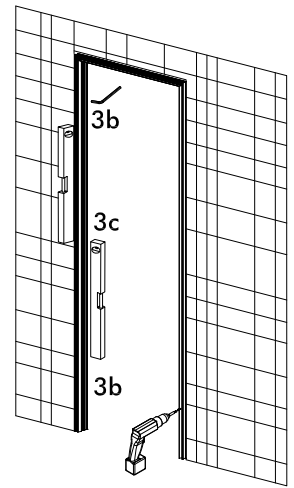
- FISSAGGIO MEZZO TELAIO CON PROFILO BATTUTA
- FIXING OF HALF FRAME WITH CLOSURE PROFILE
- FIXATION DU DEMI-CHASSIS AVEC LE PROFILO DE BUTEE



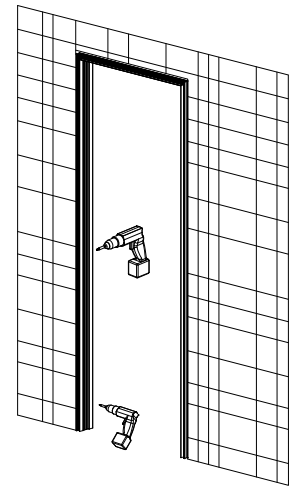
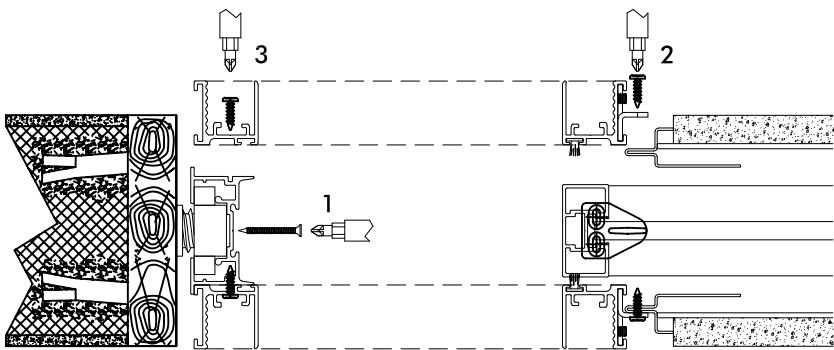
SE NECESSARIO  
USARE SP. 2mm  
IN DOTAZIONE

SI NECESSAIRE  
UTILISER LA CALE  
DE 2mm FOURNIE

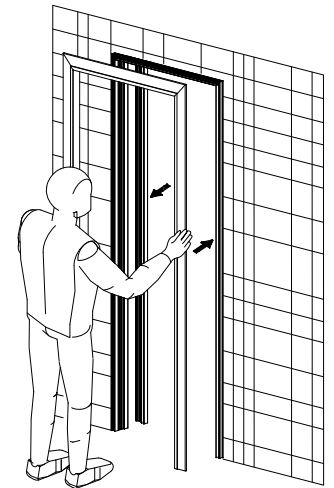
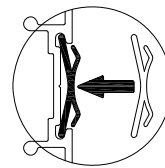
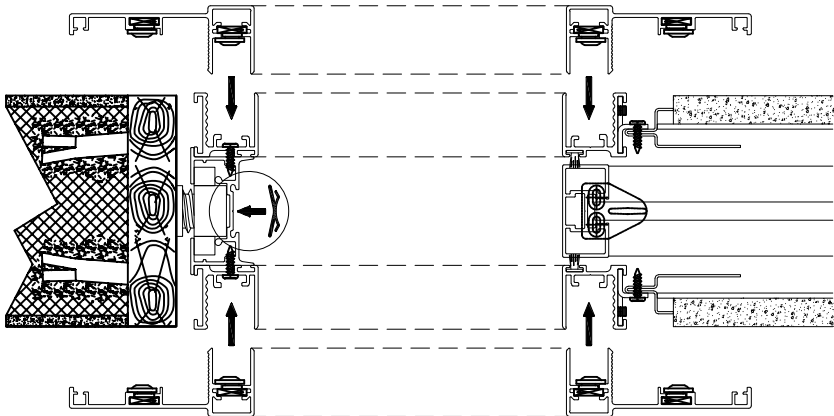
IF NECESSARY USE  
THE 2 mm SPACER  
PROVIDED



- FISSAGGIO COMPLETO DEL TELAIO
- COMPLETE FIXING OF FRAME
- FIXATION COMPLETE DU CHASSIS



- ACCOPIAMENTO CORNICI STIPITE
- FITTING DOORPOST EDGING TRIMS
- ACCOUPLEMENT CADRE KIT DE FINITION



- OPZIONE CORNICE PROLUNGA
- OPTIONAL EDGING TRIM EXTENSION
- OPTION PROLONGEMENT DE CADRE

