



POCKET DOOR SYSTEMS

SCRIGNO



Opening Systems by Scigno

Market leader since 1987

Scigno has been manufacturing sliding and swing door systems in Italy for over 30 years, products which improve quality of life with innovative, practical and versatile design solutions.

THE FIRST SCRIGNO DOOR

In 1989, Scigno patented the metal-framed pocket door system: for the first time, a door disappeared inside a wall.

AMONG THE BEST-KNOWN*

Recent market research shows that Scigno is the brand recognised as leader in the Opening Systems market, both by consumers and professionals.

THE MOST RECOMMENDED*

Over 90% of customers who chose Scigno would recommend the brand, as they are completely satisfied with the product.

(*) Online survey of 1,000 consumers and professionals, November 2023.

DURABILITY

ROBUSTNESS

EASILY ACCESSORISABLE

SMOOTH SLIDING

HIGH MAXIMUM DOOR WEIGHT

EASE OF INSTALLATION

SUSTAINABILITY



The widest range on the market.

A world of pocket door systems.

Scigno's extensive range of pocket door systems offers the highest levels of design versatility to customers and professionals, allowing them to always find what they need without compromises. Available in the Platinum and Tech lines, they are extremely durable solutions with superior performance, as demonstrated by tests performed by accredited institutes. All our pocket door systems are the result of extensive technical R&D which has made them unique in the market: they offer peerlessly smooth and quiet sliding, in order to create harmonious and comfortable living environments, and set themselves apart with their great ease of installation.

Why choose Scrigno pocket door systems?

Top performance on the market.

Scrigno's pocket door systems have long been recognised as the best in the sector with improvements constantly being made to them, both in terms of their design and durability. Tests performed by accredited institutes certify and confirm the superiority of Scrigno's pocket door systems compared to the main competitors in the market, in terms of their durability, robustness, accessorisability, smooth sliding and light weight, ease of installation and production sustainability.



TECH LINE

Scrignotech
Techzero

OpenBox
OpenBox Fit

	Scrignotech Techzero	OpenBox OpenBox Fit
DURABILITY	★★★★☆	★★★★☆
RIGIDITY AND ROBUSTNESS	★★★★☆	★★★★☆
TRACK ACCESSORISABILITY	★★★★☆	★★★★☆
SMOOTH SLIDING HANGER	★★★★☆	★★★★☆
LIGHTWEIGHT AND MANAGEABLE	★★★★☆	★★★★☆
HIGH MAXIMUM DOOR WEIGHT	★★★★☆	★★★★☆
EASE OF INSTALLATION	★★★★☆	★★★★☆
SUSTAINABILITY	JAMB 70% PEFC CERTIFIED	PRODUCT 70% PEFC CERTIFIED

PLATINUM LINE

Maestro/Essential
and options

Magnifico
Magnifico Fit

Main
competitors

	Maestro/Essential and options	Magnifico Magnifico Fit	Main competitors
DURABILITY	★★★★☆	★★★★☆	★★★☆☆
RIGIDITY AND ROBUSTNESS	★★★★☆	★★★★☆	★★★☆☆
TRACK ACCESSORISABILITY	★★★★☆	★★★★☆	★★★☆☆
SMOOTH SLIDING HANGER	★★★★☆	★★★★☆	★★★☆☆
LIGHTWEIGHT AND MANAGEABLE	★★★★☆	★★★★☆	★★★☆☆
HIGH MAXIMUM DOOR WEIGHT	★★★★☆	★★★★☆	★★★☆☆
EASE OF INSTALLATION	★★★★☆	★★★★☆	★★★☆☆
SUSTAINABILITY	PRODUCT 70% PEFC CERTIFIED	JAMB 70% PEFC CERTIFIED	

Tests performed by accredited institutes.

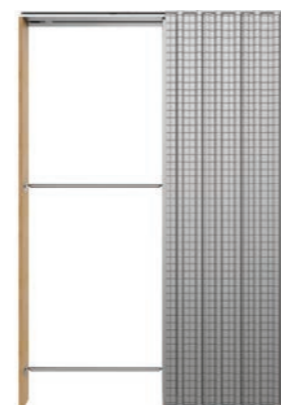
The Platinum Line is a versatile collection of design solutions for sliding doors.

This range of pocket door systems features magnetic or mechanical double-level sliding track, and has proven to be the quietest as well as the most durable.

Made from tough ALUZINC® alloy and featuring thick sheet metal to guarantee solidity, these pocket door systems guarantee peerless durability and performance.



FLUSH-FITTING



WITH DOOR POSTS

Platinum Line

Strengths:



MAGNIFICO MAGNIFICO FIT

The only pocket door system with friction-free magnetic track which offers the smoothest, quietest sliding.

DURABILITY | 5 ★

Lifetime guarantee on the whole product. The hanger is rated to 100,000+ cycles*. The friction-free magnetic technology makes the track durable for its entire lifetime. Greater corrosion resistance than the competition thanks to the exclusive Aluzinc® alloy.

RIGIDITY AND ROBUSTNESS | 5 ★

THE MOST ROBUST PRODUCT ON THE MARKET. Up to 70% more rigid than the competition. The opening of the pocket door system is designed to be the most robust on the market, thanks to its reinforced structure.

TRACK ACCESSORIES | 5 ★

Product supplied as standard with opening and closing magnetic brake.

SMOOTH SLIDING HANGER | 5 ★

THE SMOOTHEST SLIDING ON THE MARKET. Force required to move the door 90% lower than the best traditional pocket door system (200 g compared to 2 kg). Force required to disengage the shock absorber 60% less than with a traditional system.

MAXIMUM DOOR WEIGHT | 3 ★

Up to 80 kg.

EASE OF INSTALLATION | 4 ★

Possibility to insert the base in the 75 mm plasterboard profile. Track supplied with hangers pre-installed.

SUSTAINABILITY

Jamb 70% PEFC certified



MAESTRO / ESSENTIAL AND OPTIONS

The toughest and most robust pocket door system on the market.

DURABILITY | 5 ★

Lifetime guarantee on the whole product. The hanger is rated to 100,000+ cycles* with 50% more weight than the main competitors (150 kg). Greater corrosion resistance than the competition thanks to the exclusive Aluzinc® alloy.

RIGIDITY AND ROBUSTNESS | 5 ★

THE MOST ROBUST PRODUCT ON THE MARKET. Up to 70% more rigid than the competition. The steel hanger can withstand a load of over 600 kg. The opening of the pocket door system is designed to be the most robust on the market, thanks to its reinforced structure.

TRACK ACCESSORISABILITY | 5 ★

Patented double-level system which allows accessories to be inserted and regulated even after installation without removing the track.

SMOOTH SLIDING HANGER | 4 ★

Force required to start the door moving less than 2.5 kg with 50% more weight than the competition, thanks to the hanger with 4 bearings and 7 balls.

MAXIMUM DOOR WEIGHT | 5 ★

The pocket door system with the highest maximum door weight on the market: up to 150 kg even in standard configuration.

EASE OF INSTALLATION | 4 ★

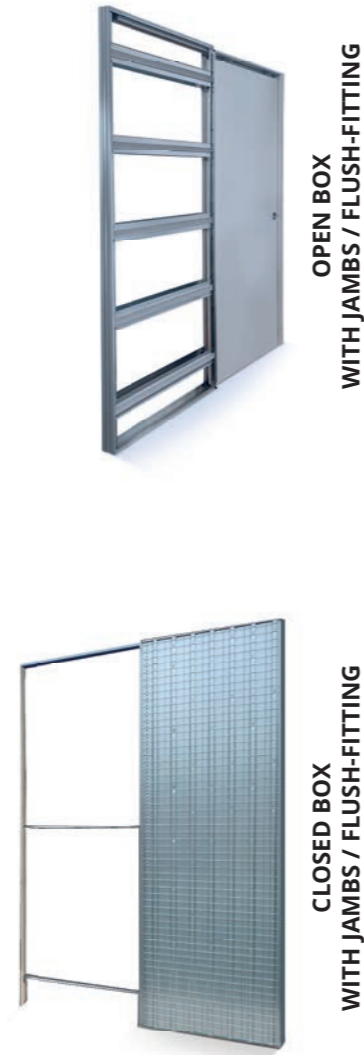
Possibility to insert the base in the 75 mm plasterboard profile. Fastening spring for facilitated and correct positioning of the track.

SUSTAINABILITY

Product 70% PEFC certified.

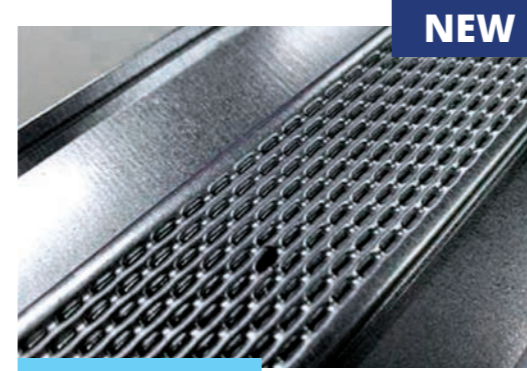
* Tests on the rigidity of the side and opening. Tests performed by accredited institutes.

This range of pocket door systems is made entirely from galvanised steel in order to guarantee robustness and reliability. Each product is designed to simplify the assembly and installation operations and make them fast and intuitive. The robustness of the sides, certified by strict tests performed by accredited institutes, provides stability to the structure. The Tech Line incorporates solutions to best meet the market's most commonly requested requirements: light weight, accessorisability, and strength.



Tech Line

Strenghts:



OPENBOX / OPENBOX FIT

The perfect pocket door system for plasterboard.

DURABILITY | 4 ★
Guarantee of 20 years on the whole product. The hanger is rated to 100,000+ cycles with 20% more weight than the main competitors (120 kg).

RIGIDITY AND ROBUSTNESS | 4 ★
The structure is twice as rigid as the closed-box system. The hanger can withstand a load of over 400 kg. Ten reinforcement bars. Continuous lower base. Patented anti-release bulge.

TRACK ACCESSORISABILITY | 5 ★
Patented double-level system which allows accessories to be inserted and regulated even after installation without removing the track.

SMOOTH SLIDING HANGER | 4 ★
Force required to start the door moving less than 2 kg with 20% more weight than the competition, thanks to the hanger with 4 bearings and 7 balls.

LIGHTWEIGHT AND MANAGEABLE | 5 ★
Up to 50% lighter than closed-box product.

MAXIMUM DOOR WEIGHT | 4 ★
The open-box pocket door system with the highest maximum door weight on the market: up to 120 kg even in standard configuration (20 % greater than the main competitor).

EASE OF INSTALLATION | 5 ★
Designed to offer maximum ease of installation thanks to: insertion in the 75 mm profile; pre-drilled reinforcement bars; additional bridge element; front fastening spring; rear retention spring to prevent vibration; open structure allowing facilitated fastening from the inside.

SUSTAINABILITY
Product 70% PEFC certified.

Tests performed by accredited institutes.



SCRIGNOTECH AND TECHZERO

The tough and versatile pocket door system.

DURABILITY | 3 ★
Guarantee of 10 years on the whole product. The hanger is rated to 100,000+ cycles.

RIGIDITY AND ROBUSTNESS | 3 ★
The hanger can withstand a load of over 300 kg.

TRACK ACCESSORIES | 3 ★
Closing damper available as accessory.

SMOOTH SLIDING HANGER | 3 ★
Less than 2.5 kg of force required to set the door in motion.

LIGHTWEIGHT AND MANAGEABLE | 4 ★
The wet plaster product is over 40% lighter than the main competitor's product.

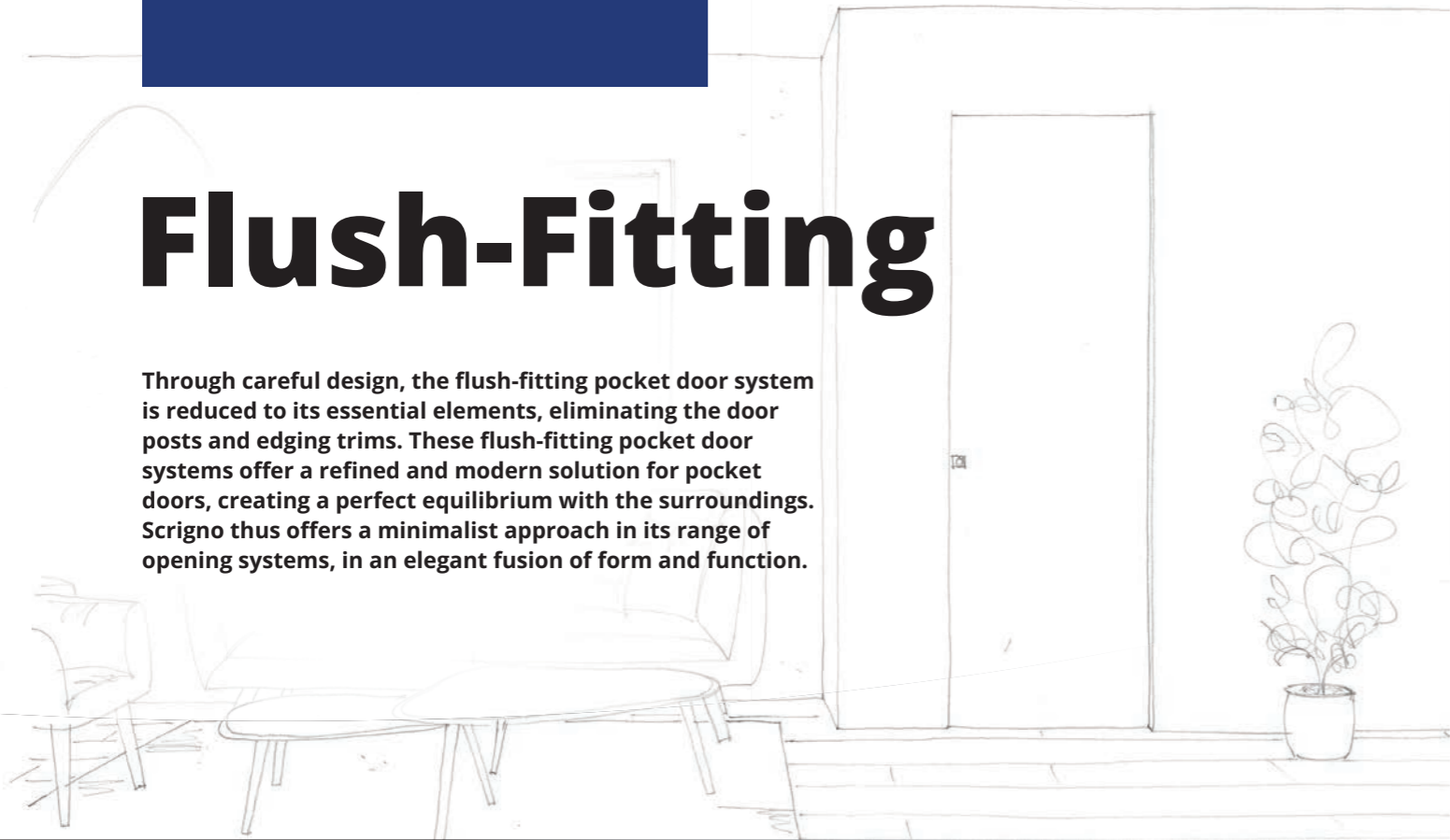
MAXIMUM DOOR WEIGHT | 3 ★
Up to 100 kg, even in standard configuration.

EASE OF INSTALLATION | 3.5 ★
The retention spring stops the track from coming out during installation.

SUSTAINABILITY
Jamb 70% PEFC certified

Flush-Fitting

Through careful design, the flush-fitting pocket door system is reduced to its essential elements, eliminating the door posts and edging trims. These flush-fitting pocket door systems offer a refined and modern solution for pocket doors, creating a perfect equilibrium with the surroundings. Scigno thus offers a minimalist approach in its range of opening systems, in an elegant fusion of form and function.



NEW

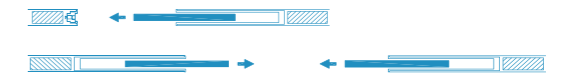
PLATINUM LINE

ESSENTIAL

Scigno's patented pocket door system without door posts and edging trims; available in a wide range of dimensions, in single and double door version. Designed for maximum customisation, it features impeccable design which offers continuity with the wall. The Aluzinc® structure guarantees great strength and durability. The double-level track allows for easy installation and regulation of accessories, even after installation of the pocket door system.

VERSIONS

- Single door
- Double door



PLATINUM LINE

MAGNIFICO FIT

Magnifico Fit is the innovative flush-fitting pocket door system which uses magnetic levitation to guide the door's movements. It represents a revolution in the world of sliding door systems: the special magnets inserted in the hangers support the door, eliminating the friction between the system components and the noise of the sliding movement.

The result is the highest level of comfort, exceptionally light weight and ultimate performance.



NEW

PLATINUM LINE

DUAL

Scigno-patented flush-fitting pocket door system with Aluzinc® structure which allows two glass sliding doors, connected by a dedicated drive system, to run in a single structure. Free of door posts and edging trims. Ideal for standard thickness wet plastered walls, with customisable size.



NEW

NEW



PLATINUM LINE

TRIAL

Pocket door system designed to allow three sliding glass doors, connected by a dedicated drive system, to run in a single Aluzinc® structure. Free of door posts and edging trims, it offers the ability to design large openings with a single pocket door frame.



NEW



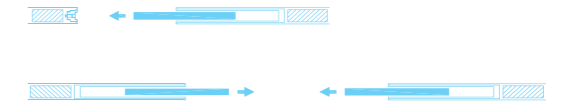
TECH LINE

OPENBOX FIT

Openbox Fit is Scigno's open-box pocket door system for plasterboard partitions, in a version free of door posts and edging trims. Durable, simple to install and with easy installation of accessories thanks to the double-level track. A galvanised steel pocket door system which is lightweight, but at the same time tough and durable.

VERSIONS

- Single door
- Double door



PLATINUM LINE

PRO

Essential pocket door system with Aluzinc® structure, specially adapted for installation of the Scigno Open 2.0 kit to offer automatic, smooth, zero-effort opening and closing. Minimalist design to maintain its typical elegance.



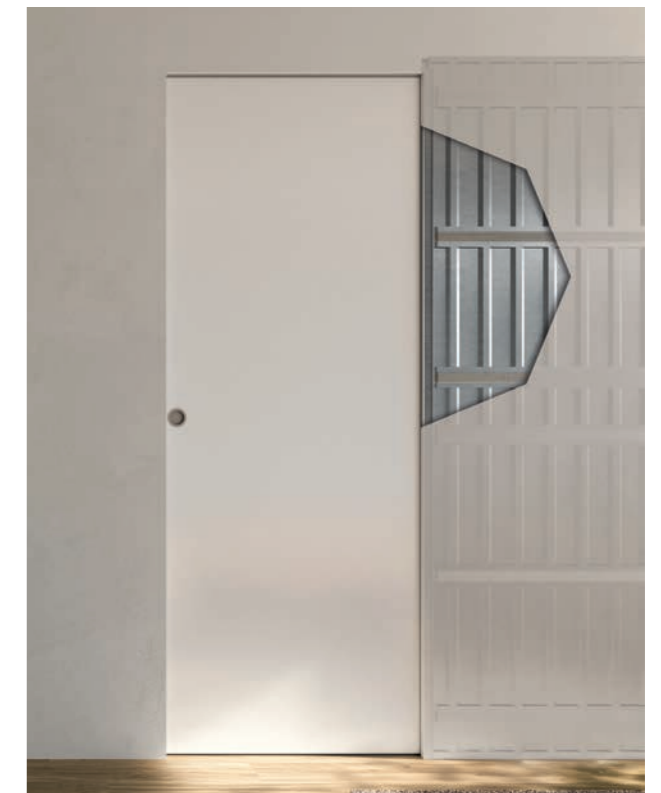
NEW



TECH LINE

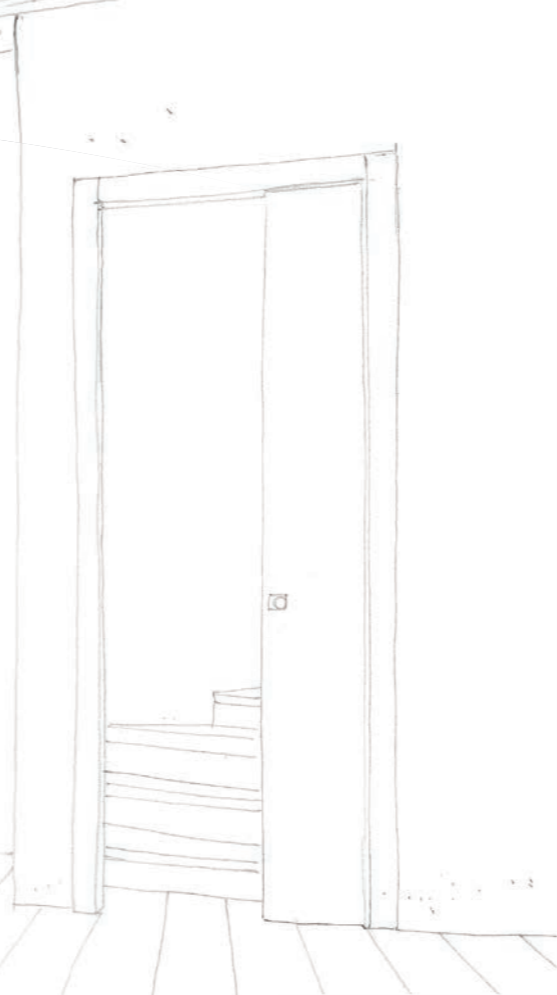
TECHZERO

The pocket door system without door posts and edging trims which allows the door to disappear into the wall. Scigno technology and the aluminium profiles simplify installation and prevent imperfections. Techzero combines comfort and minimalist style, providing a clean and uniform look to every room.



With door posts

Our pocket door systems with door posts transform living spaces and allow them to be separated or connected with ease. The ability to adapt spaces in this manner when required ensures a convenient and intimate living experience. Behind Scrigno's vision are years of design, fine tuning, technical tests and practical applications. This artisan commitment and passion reached its peak in 1988 with the creation of the first "modular system" on an industrial scale. The fusion of form and function makes Scrigno's pocket door systems with door posts a reliable choice for more flexible and comfortable domestic living.



NEW



PLATINUM LINE

MAESTRO

The first pocket door system designed and patented by Scrigno, available in single- and double-door versions, with measurements which can be customised to the nearest centimetre. A model equipped with modular Aluzinc® side panel to guarantee the highest level of durability, and a double-level track to facilitate installation and maintenance of accessories. Scrigno's first pocket door system is a genuine classic.

VERSIONS

- Single door
- Double door



PLATINUM LINE

MAGNIFICO

Magnifico is the revolutionary passive magnetic levitation pocket door system. It offers a peerlessly smooth and quiet sliding action, thanks to the presence of magnets which eliminate any friction. Effortless operation with maximum smoothness and comfort. Extremely tough and durable. A choice of style which revolutionises the idea of space.



NEW



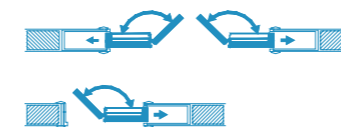
PLATINUM LINE

APPLAUSO

The Applauso pocket door system with Aluzinc® structure houses a folding sliding door with leaves which fold in on themselves, optimising the space. The ideal solution for small spaces requiring large passageways. Available in single- or double-leaf door, exclusively for wet-plastered walls.

VERSIONS

- Single door
- Double door



NEW

NEW



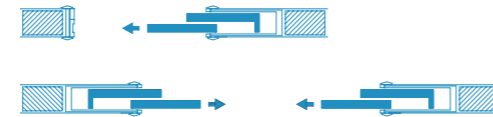
PLATINUM LINE

GRANLUCE

A single pocket door system which allows two overlapping sliding doors, connected by a drive system, to disappear into the wall. Available in single 2-leaf or double 4-leaf version, ideal for wide openings.

VERSIONS

- Single door
- Double door



NEW



PLATINUM LINE

PRATICO

Two overlapping leaves slide inside a single central pocket door frame, ideal for contiguous spaces which do not have sufficient space for the installation of two pocket door systems. Reduces the space required; suitable for wet-plastered walls. Its Aluzinc® structure makes it particularly resistant to corrosion.



PLATINUM LINE

REMIX

Designed for the installation of two glass doors connected together, housed inside a single pocket door frame.

It is an exclusive Scrigno patent, and available in heights customisable to the nearest centimetre. It can be installed on standard thickness walls, and is exclusively for wet-plastered walls.



NEW



PLATINUM LINE

ORBITALE

Orbitale is the special pocket door system designed for curved walls: it allows one or two doors to disappear inside the wall, and can be customised to the nearest centimetre. This pocket door system provides a specific response to structural, aesthetic and design requirements, satisfying the needs of the designers.

VERSIONS

- Single door
- Double door



NEW



TECH LINE

OPENBOX

Scigno's first open-box pocket door system, available for single and double doors. Tough, manageable and accessorisable. With a design which takes the smallest details into account, its light weight makes it easy to transport and install, but at the same time very solid and robust thanks to the pre-drilled reinforcement bars. Thanks to the retention spring, designed and patented by Scigno, its double-level track can be inserted simply and safely, allowing the addition of accessories even following installation.

VERSIONS

- Single door
- Double door



TECH LINE

SCRIGNOTECH

Scrignotech is the galvanised steel pocket door system with door posts which allows the installation of single or double leaves. An extremely reliable and durable sliding system which meets standard needs yet adapts to every environment.

VERSIONS

- Single door
- Double door



DOOR/POCKET DOOR SYSTEM COMPATIBILITY

KEY ■ PLATINUM LINE
■ TECH LINE

		Magnifico Fit	Essential	Pro	Dual	Trial	Techzero	OpenBox Fit	Magnifico	Maestro	Granluce	Remix	Applauso	Pratico	Orbitale	Scrignotech	OpenBox	
WOODEN DOORS	LACQUERED - FLUSH-FITTING	■	■	■			■	■										
	LACQUERED - WITH DOOR POSTS								■	■						■	■	
	LACQUERED FOR PRATICO													■				
	LACQUERED FOR APPLAUSO												■					
	LACQUERED FOR ORBITALE														■			
	LACQUERED FOR GRANLUCE										■							
	LAMINATED - FLUSH-FITTING	■	■	■				■	■									
	LAMINATED - WITH DOOR POSTS									■	■						■	■
GLASS DOORS	MIRR - FLUSH-FITTING		■				■	■										
	ACQUA - FLUSH-FITTING	■	■				■	■										
	ACQUA - WITH DOOR POSTS								■	■							■	■
	ARIA - FLUSH-FITTING	■	■				■	■										
	ARIA FOR DUAL				■													
	ARIA FOR TRIAL					■												
	ARIA - WITH DOOR POSTS								■	■							■	■
	ARIA FOR REMIX											■						

COMPATIBILITY OF ACCESSORIES

		Slow Tech	Bi-directional damper	Slow Glass	Open 2.0	Simultaneous Opening Kit	Soft Close for Trial	Hanger Kit	Unfinished Door Posts
POCKET DOOR SYSTEMS	PLATINUM LINE		ESSENTIAL MAESTRO PRATICO	ESSENTIAL MAESTRO PRATICO	MAESTRO PRO	MAESTRO	TRIAL	ALL	ALL
	TECH LINE	SCRIGNOTECH TECHZERO	OPENBOX FIT OPENBOX	OPENBOX FIT OPENBOX	SCRIGNOTECH OPENBOX	SCRIGNOTECH		ALL	ALL

SCRIGNO
BE OPEN | BE AUTHENTIC

POCKET DOOR SYSTEMS BROCHURE • JANUARY 2024 • Rev. 0



scrigno.com

LEARN MORE

